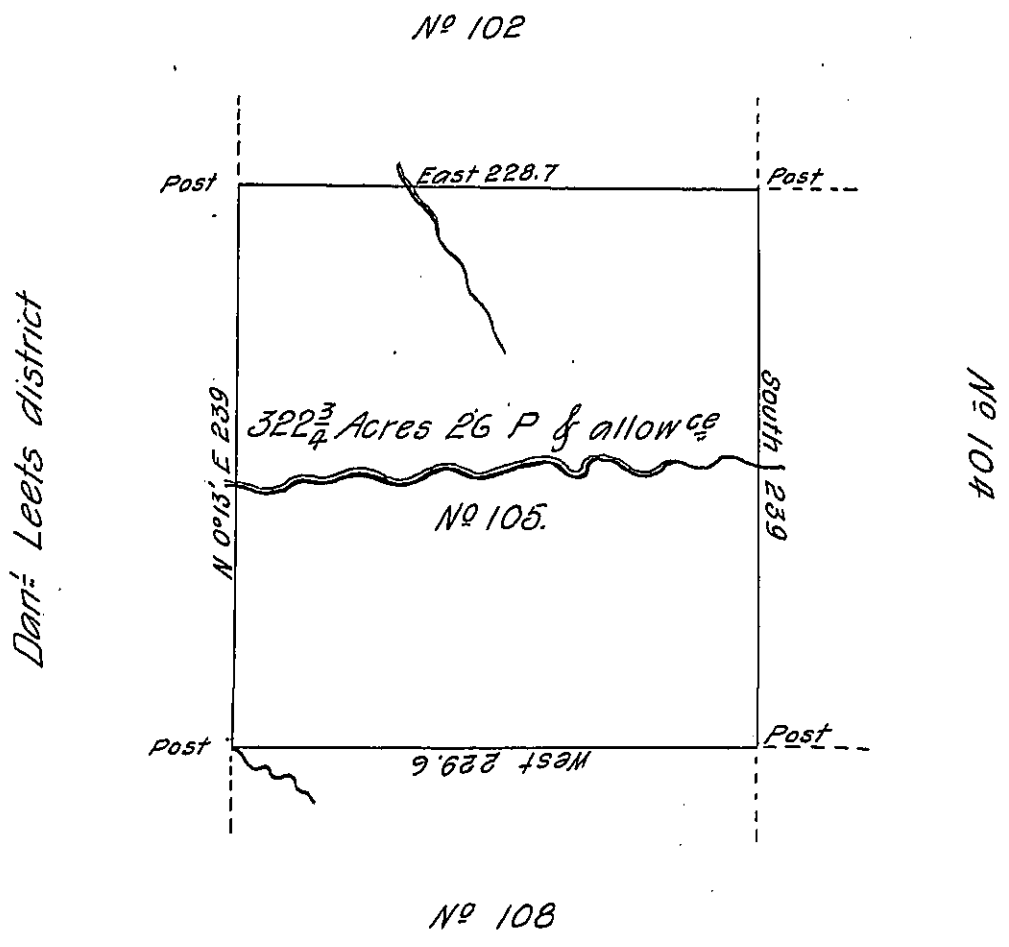


5
P-9-238
1688



Situate on the Waters of Big Soneckly Creek between the twenty eighth and twenty ninth Parallel in that Part of District No 3 to me allotted on the North side of the River Ohio being Part of the land appropriated for the Redemption of the Certificates of Depreciation &c. Surveyed in June 1785. Pursuant to Instructions from Jno Lukens Esq. Surveyor Gen. dated at Philad. 5th March 1785.

Nat. Breeding D.S.

IN TESTIMONY that the above is a copy of the original remaining on file in the Department of Internal Affairs of Pennsylvania, made conformably to an Act of Assembly approved the 16th day of February, 1833, I have hereunto set my Hand and caused the Seal of said Department to be affixed at Harrisburg, this second day of June 1905.

James R. Brown
Secretary of Internal Affairs.